



issue 28-01




issue 28-02



issue 28-03



issue 28-04



issue 28-05



issue 28-06



issue 28-07



issue 28-08



issue 28-09



issue 28-10



issue 28-100



issue 28-101



issue 28-102



issue 28-103



issue 28-104



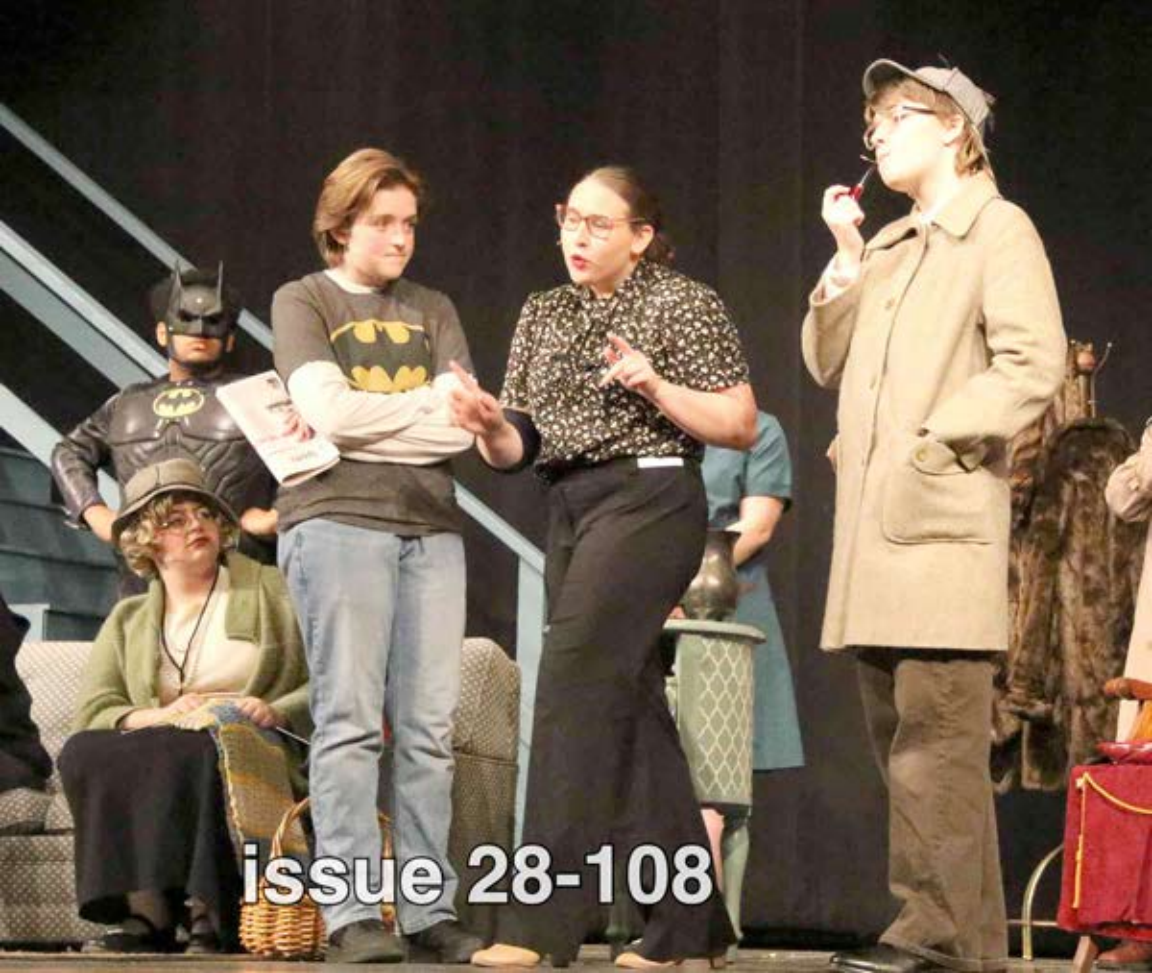
issue 28-105



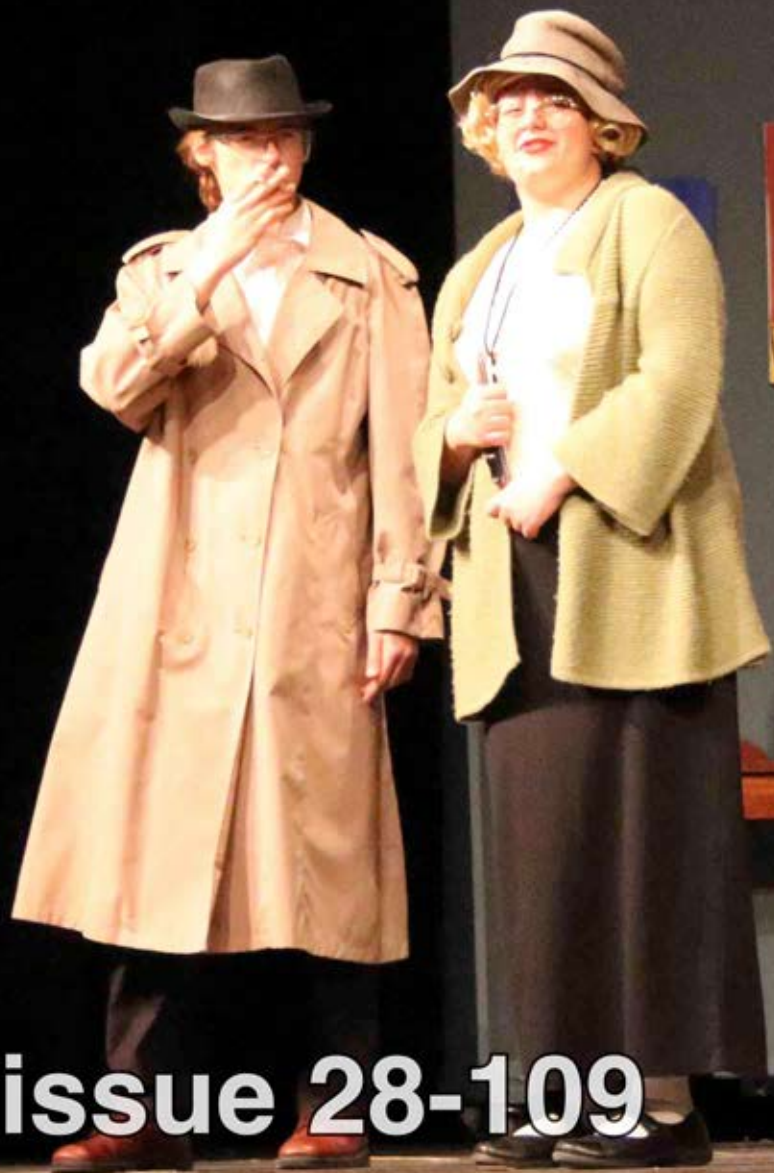
issue 28-106



issue 28-107



issue 28-108



issue 28-109



issue 28-11



issue 28-110



issue 28-111



issue 28-12



issue 28-13



issue 28-14



issue 28-15



issue 28-16



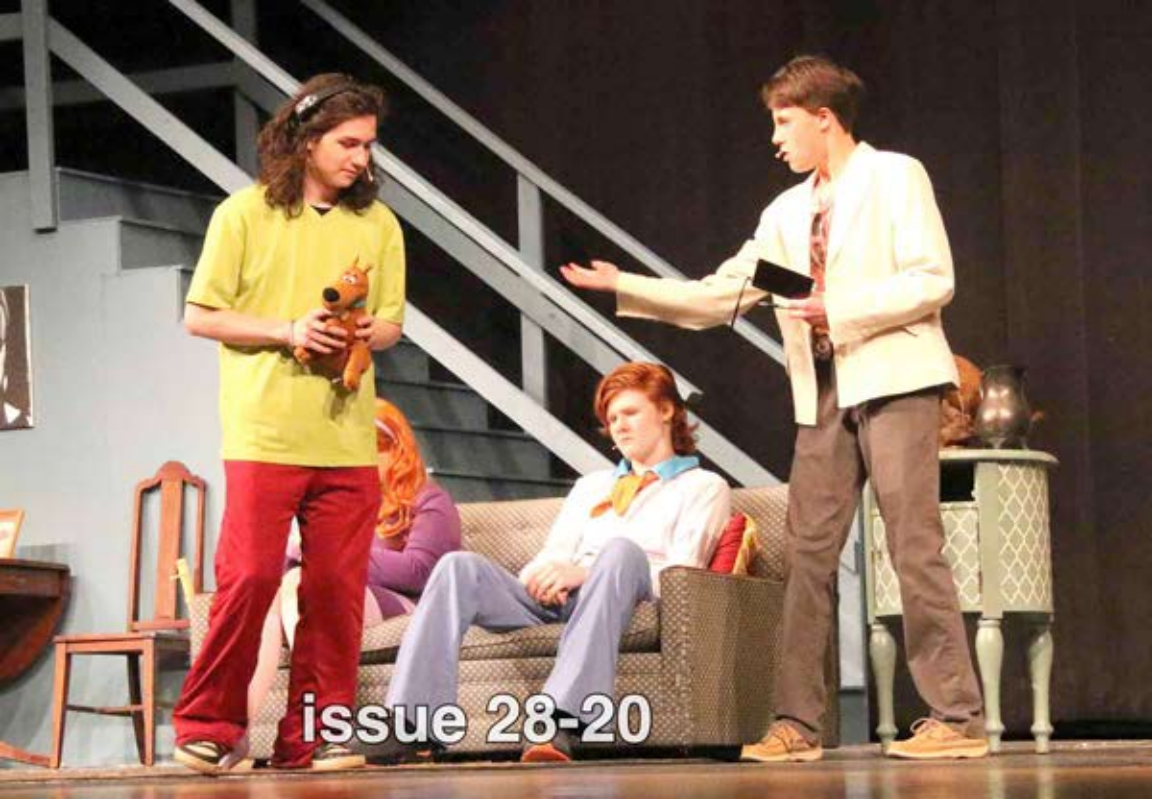
issue 28-17



issue 28-18



issue 28-19



issue 28-20



issue 28-21



issue 28-22



issue 28-23



issue 28-24



issue 28-25



issue 28-26



issue 28-27




issue 28-28



issue 28-29



issue 28-30

A group of approximately ten people are gathered on a stage. In the foreground, a person is lying face down on the floor. The others are standing around, some with their arms around each other, suggesting a scene of emotional distress or a dramatic performance. The background is dark with some stage equipment visible.

issue 28-31



issue 28-32



issue 28-33



issue 28-34



issue 28-35



issue 28-36



issue 28-37



issue 28-38



issue 28-39



issue 28-40



issue 28-41



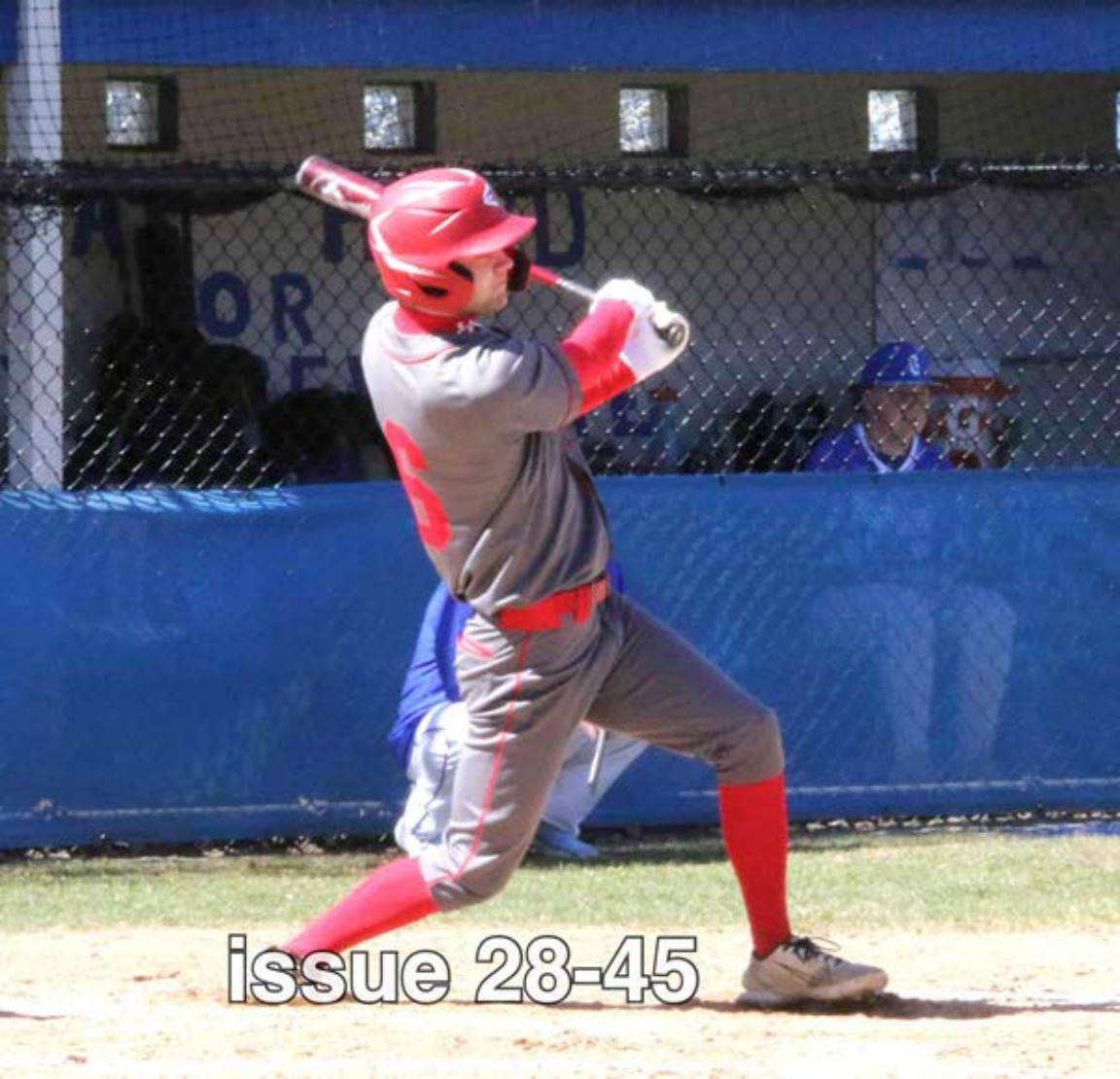
issue 28-42



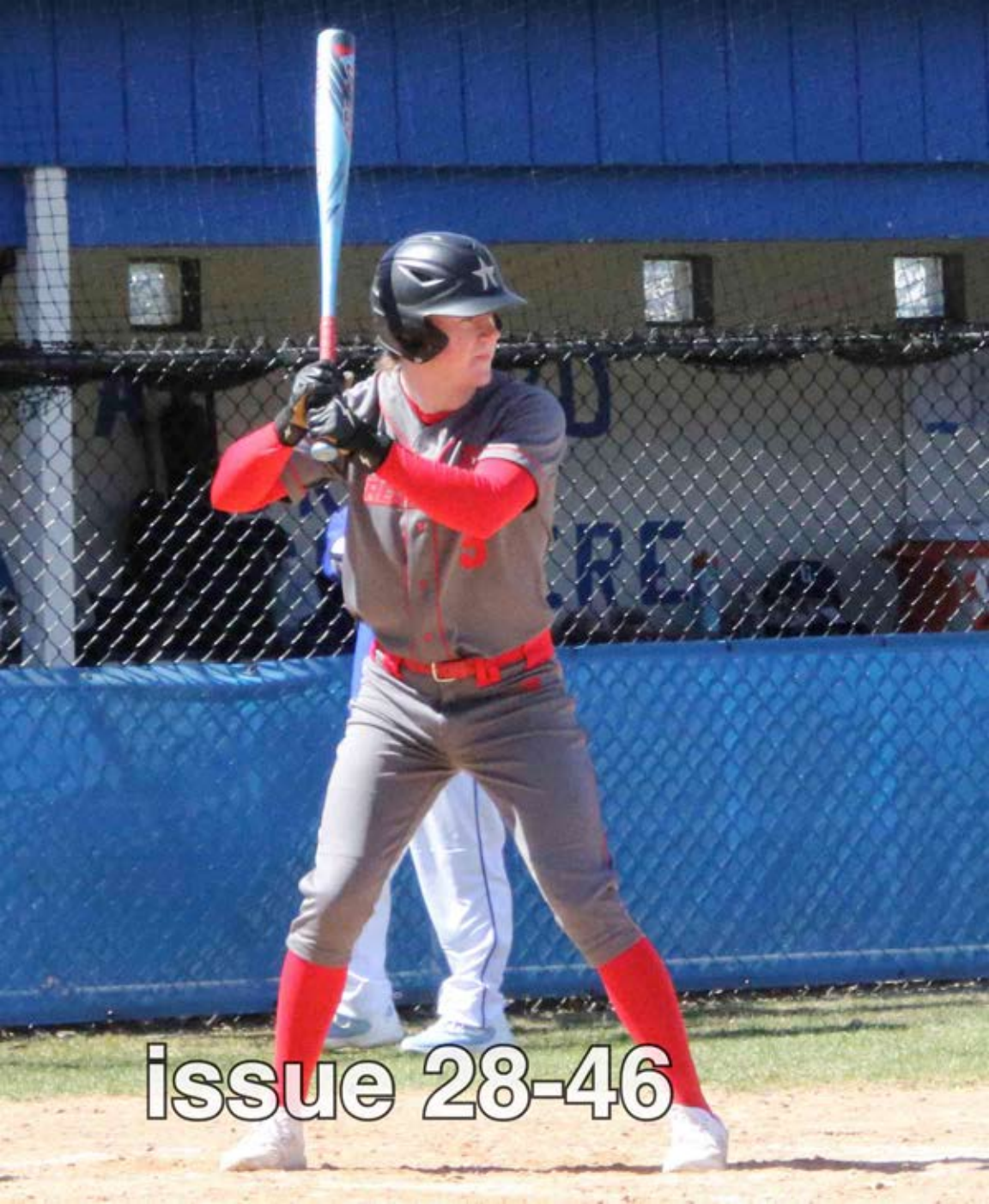
issue 28-43



issue 28-44



issue 28-45



issue 28-46



issue 28-47



issue 28-48



issue 28-49



issue 28-50



issue 28-51



issue 28-52



issue 28-53



issue 28-54



issue 28-55



issue 28-56



issue 28-57



issue 28-58



issue 28-59



issue 28-60



issue 28-61



issue 28-62



issue 28-63



issue 28-64



issue 28-65



issue 28-66



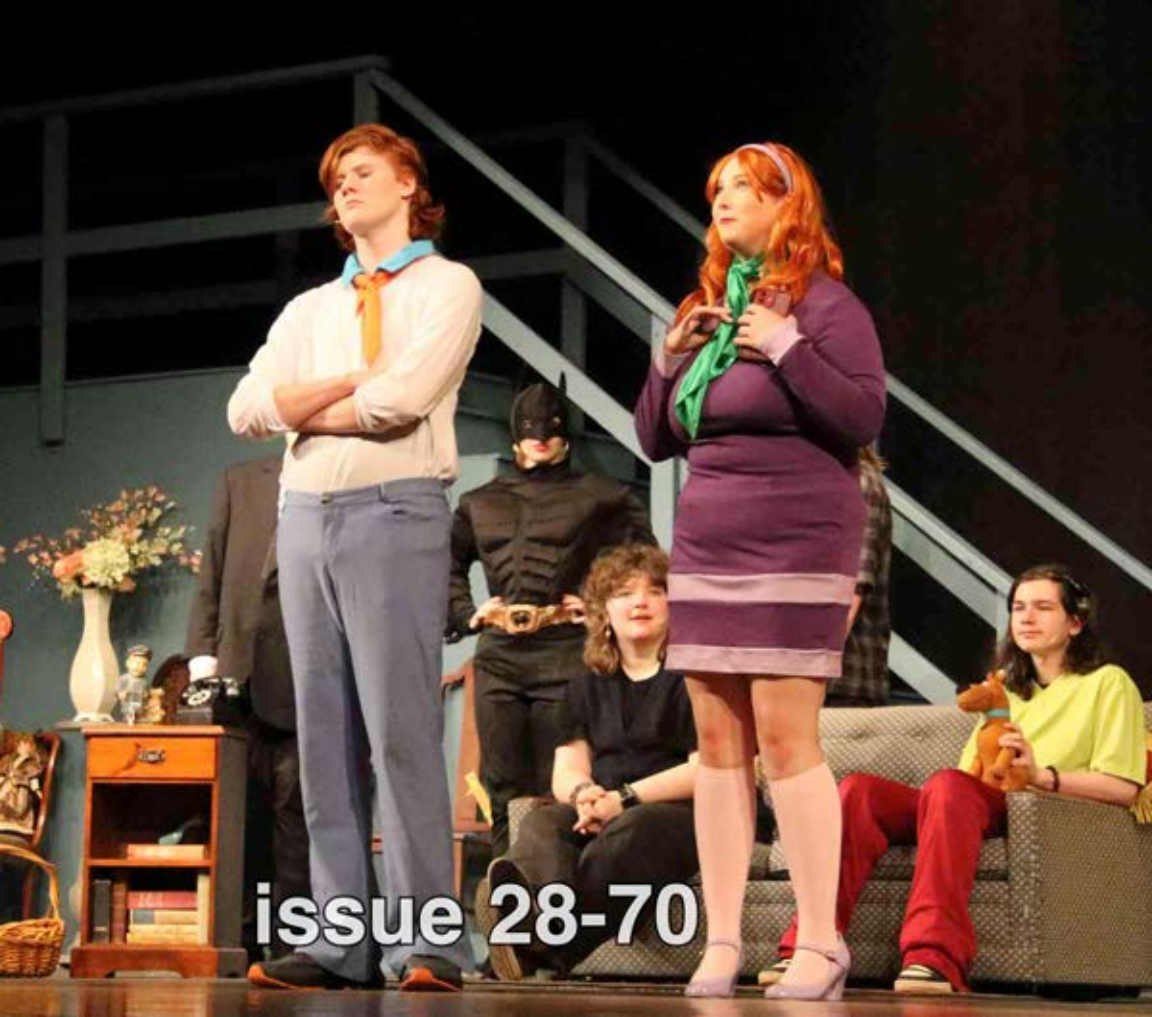
issue 28-67



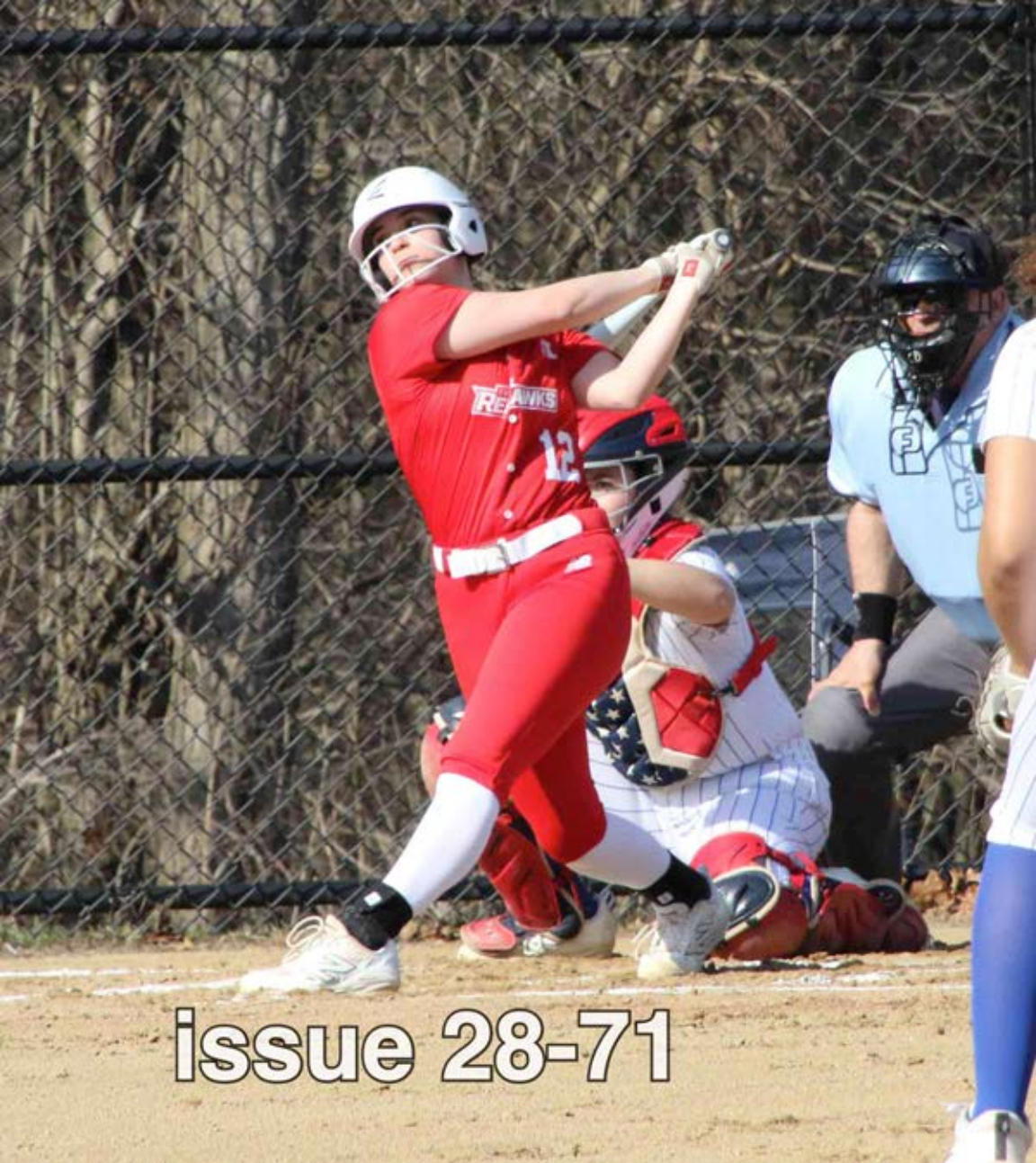
issue 28-68



issue 28-69



issue 28-70




issue 28-71



issue 28-72



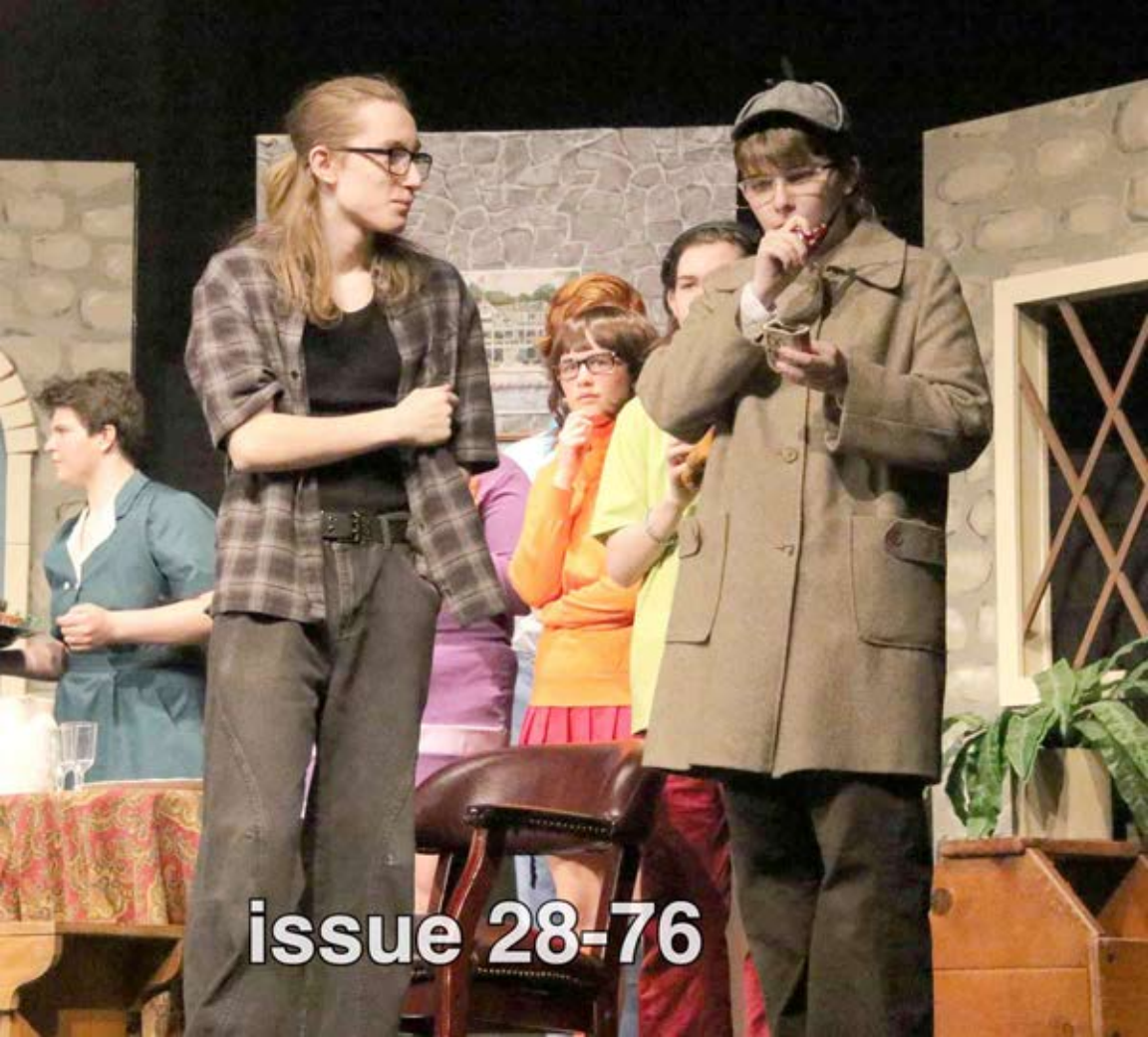
issue 28-73

A group of people on a stage set. From left to right: a man in a grey Batman t-shirt and jeans; a woman in a purple dress and white boots; a woman in a hat and yellow jacket sitting in a chair; a woman in a black outfit with a gold belt; a man in a white shirt and blue pants; a woman in a black t-shirt; a woman in a yellow top and red pants holding a stuffed animal; and a man in a plaid shirt. The background features a window and a painting.

issue 28-74



issue 28-75



issue 28-76



issue 28-77



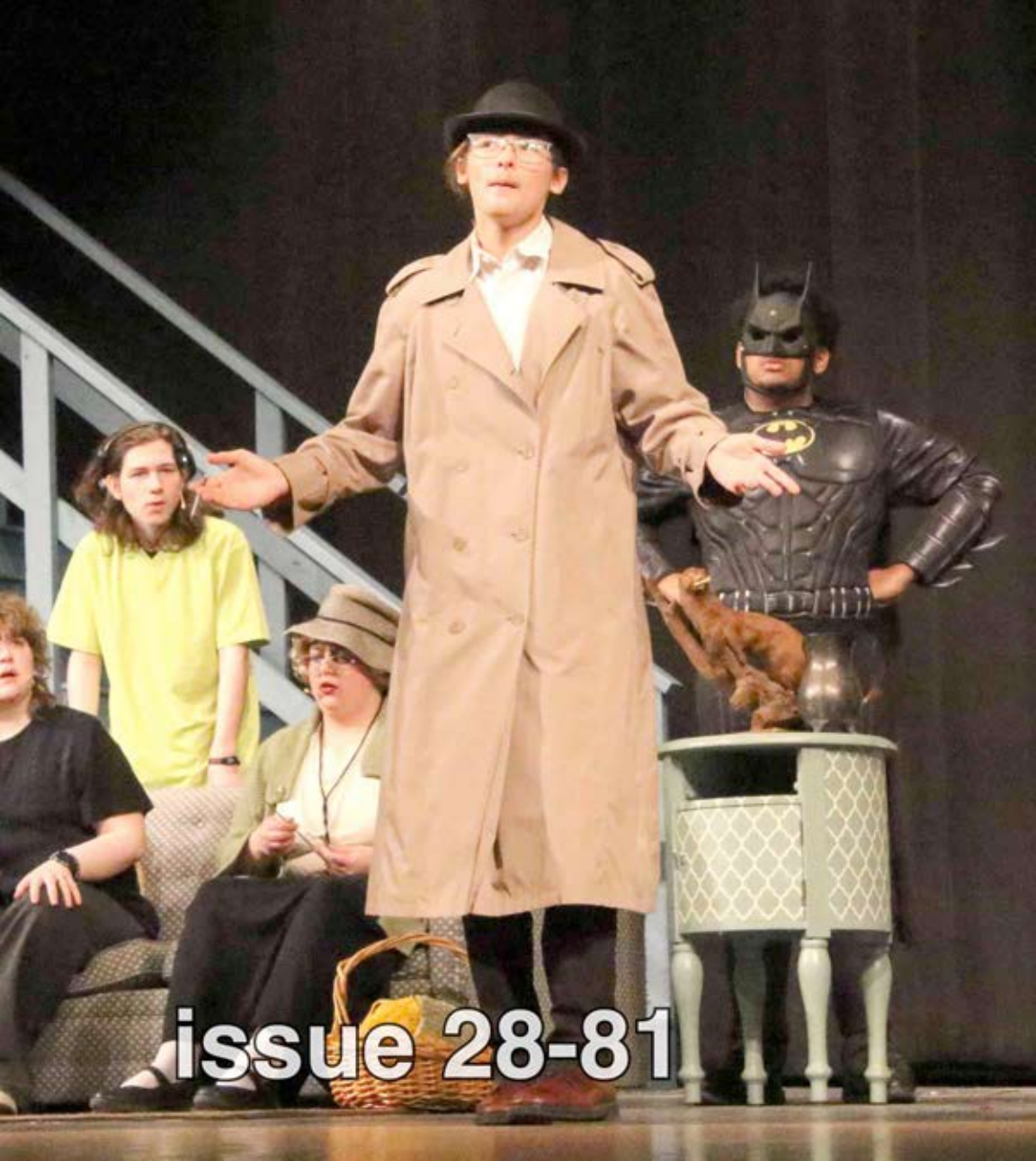
issue 28-78



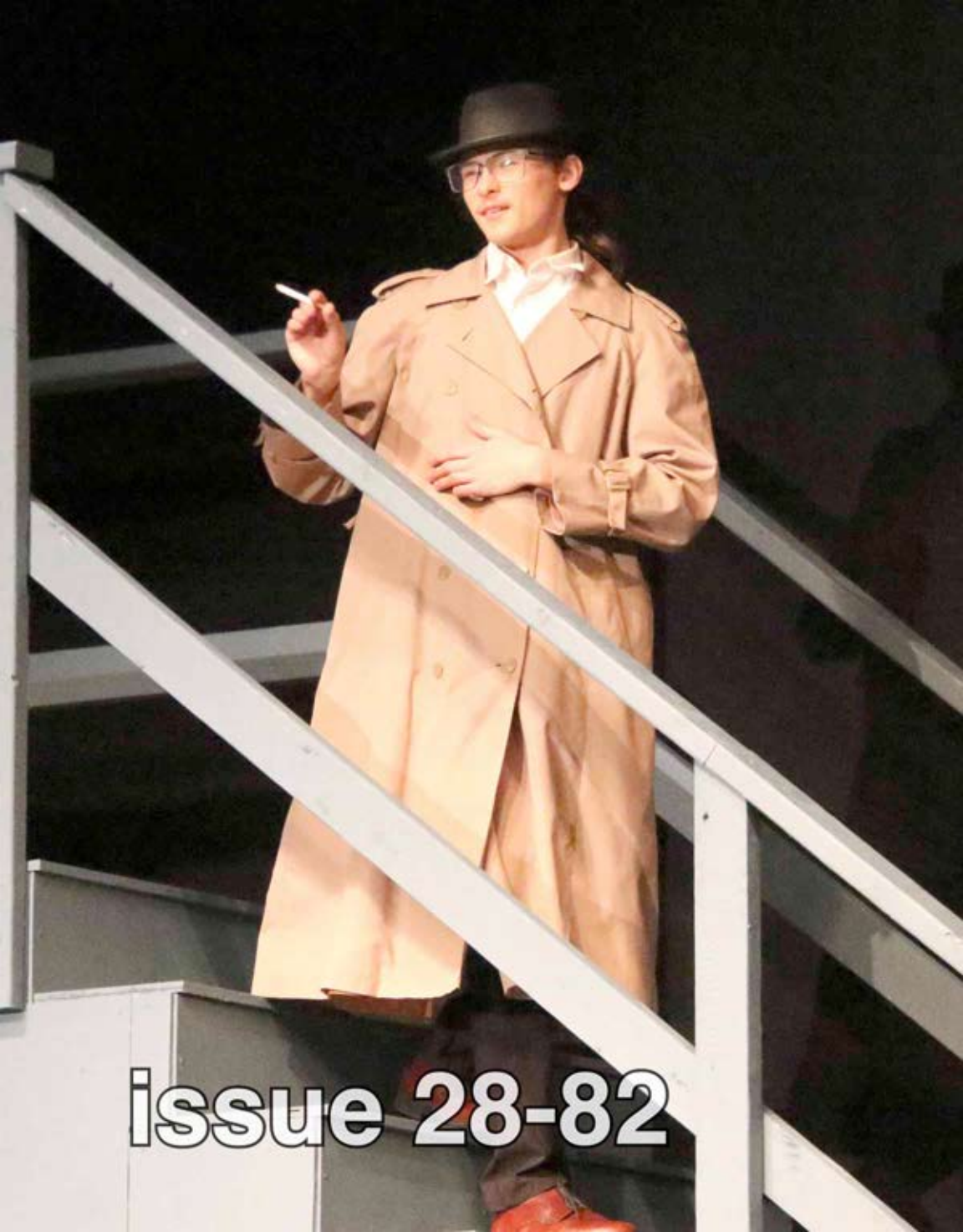
issue 28-79



issue 28-80



issue 28-81



issue 28-82



issue 28-83



issue 28-84



issue 28-85



issue 28-86



issue 28-87



issue 28-88



issue 28-89



issue 28-90



issue 28-91



issue 28-92



issue 28-93



issue 28-94



issue 28-95



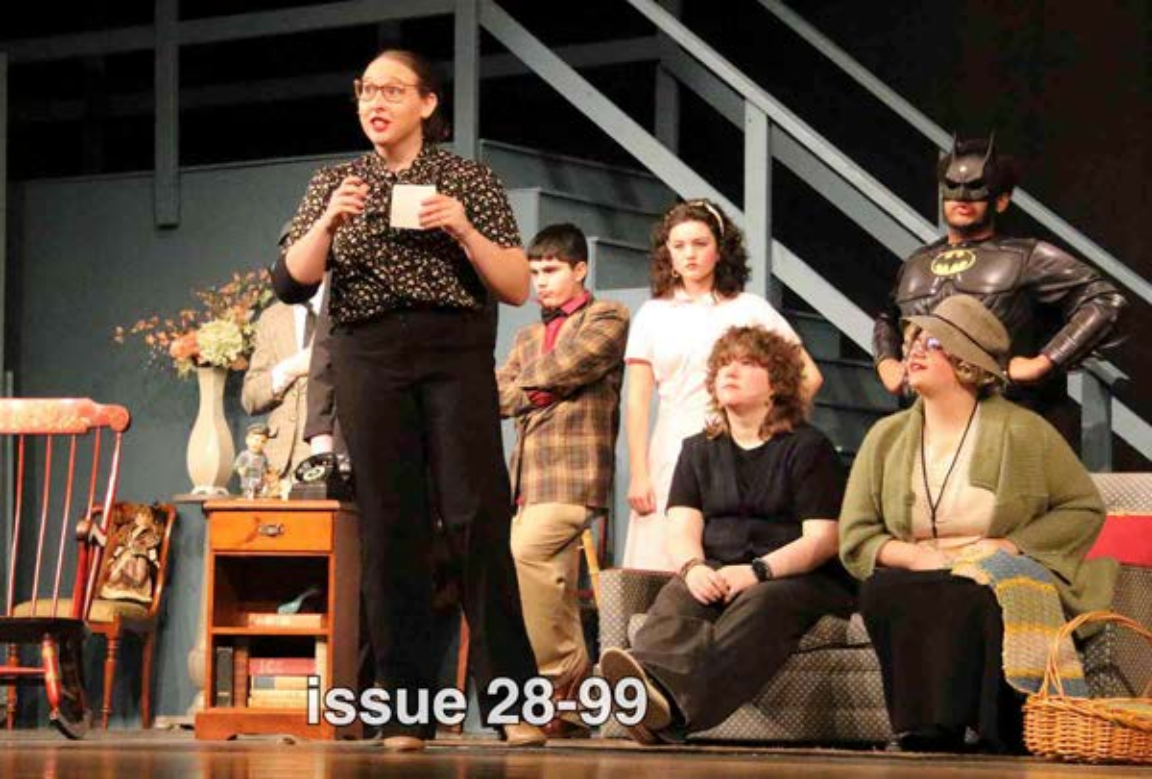
issue 28-96



issue 28=97



issue 28-98



issue 28-99